

# LAND FOR SALE

**547.32 +/- Acres**

*Monroe County, Arkansas*



**OFFERED BY:**

**G** **GLAUB**  
**FARM**  
**MANAGEMENT**  
MANAGEMENT • REAL ESTATE • CONSULTING  
INVESTMENTS • LAND AUCTIONS

 **First Mid**  
AG SERVICES

**For Additional Information Contact:**

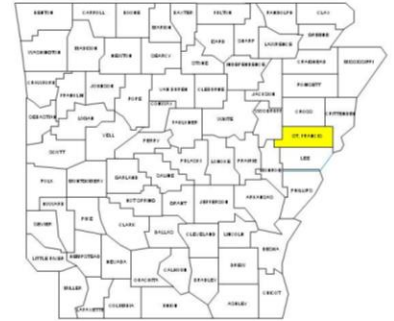
Jeffrey Hignight  
1702 Stone, Suite C  
Jonesboro, AR 72401  
Office: (870) 972-6996  
Fax: (870) 931-5985  
Email: [info@glaubfm.com](mailto:info@glaubfm.com)

Ross Perkins  
# 6 Heartland Dr, Suite A  
Bloomington, IL 61704  
Office: (309) 665-0059  
Mobile: (217)249-4115  
Email: [RPerkins@firstmid.com](mailto:RPerkins@firstmid.com)

## FARM SUMMARY

### **Property Overview:**

This 547.32 +/- acre investment is located on the east side of Brinkley, AR. The property is primarily silt loam soils with some silty clay and is irrigated. Crops are primarily rice, corn and soybeans. The farm's have improvements ranging from underground irrigation pipe, land leveling. All the irrigation wells come with electric motors.



The property is currently leased. The cropland has potential to be improved with precision leveling.

Sub surface irrigation is ample and the farm has potential for surface water development. This property has waterfowl hunting potential.

**Inspections:** Contact Glaub Farm Management, LLC or First Mid Services to inspect farms.

**Acreage:** 547.32+/- FSA Farmland acres with 463.97+/- Cropland Acres

**Lease:** Property is subject to a crop and hunting leases.

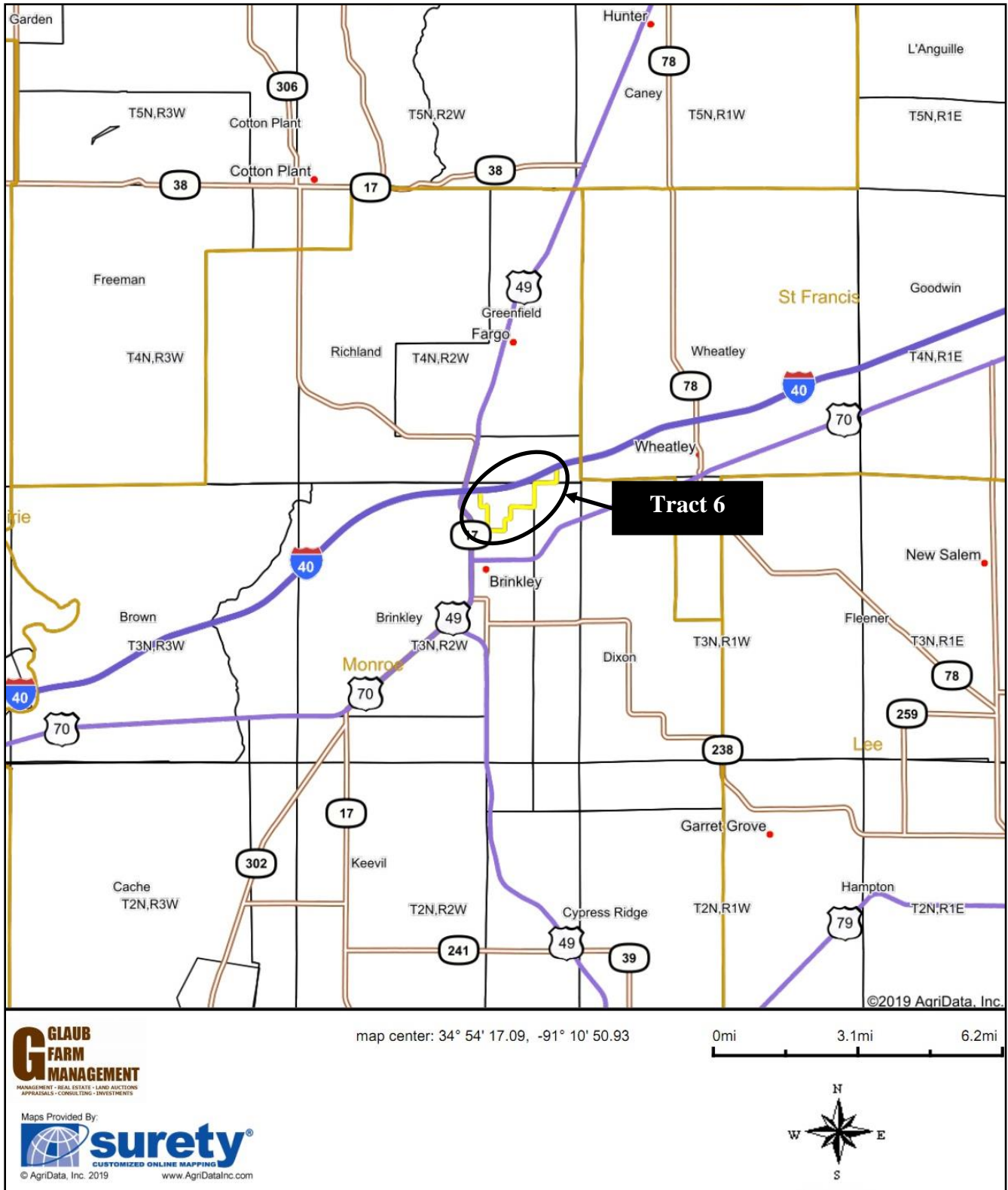
**Oil, Gas & Mineral:** All rights owned will transfer.

**Real Estate Taxes:** \$4,016.08 (2018)

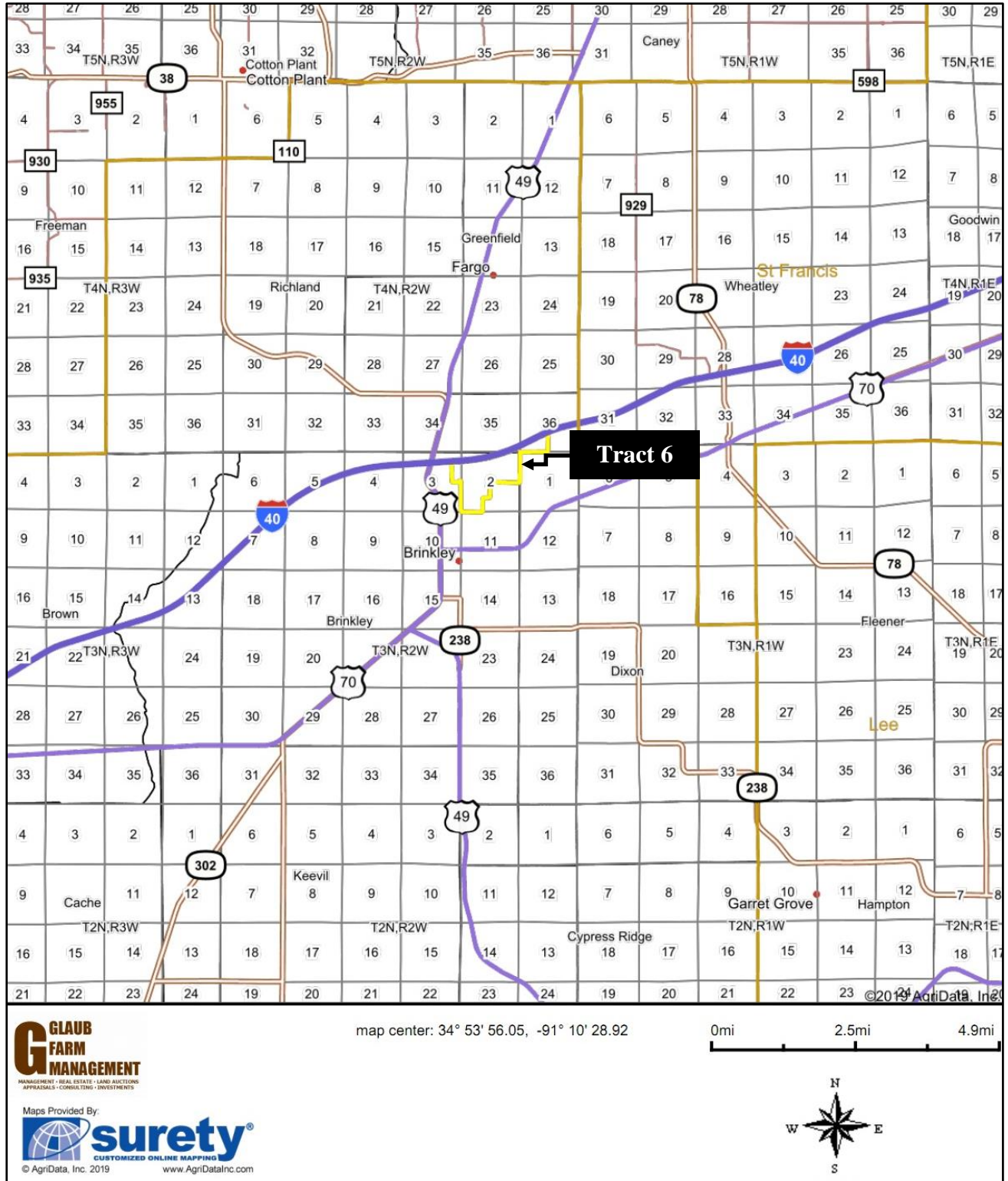
**Online Map:** <https://app.terrastridepro.com/property/71492/map?referer=iframe>

**Asking Price:** \$2,415,000

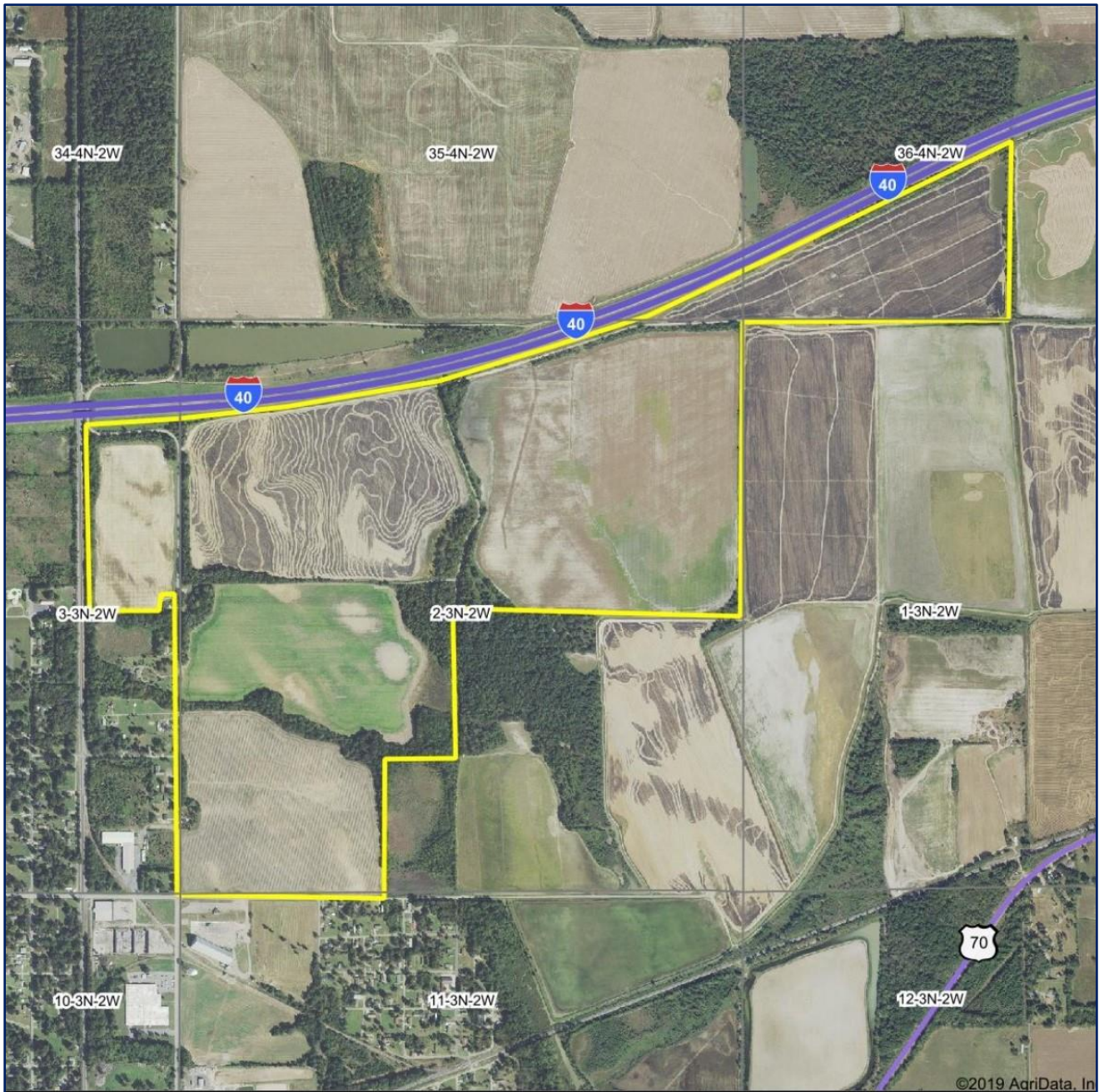
# REGIONAL MAP



# GENERAL LOCATION MAP



# TRACT 6 AERIAL MAP



©2019 AgriData, Inc

Map Center: 34° 54' 20.29, -91° 10' 33.66

0ft 1503ft 3005ft

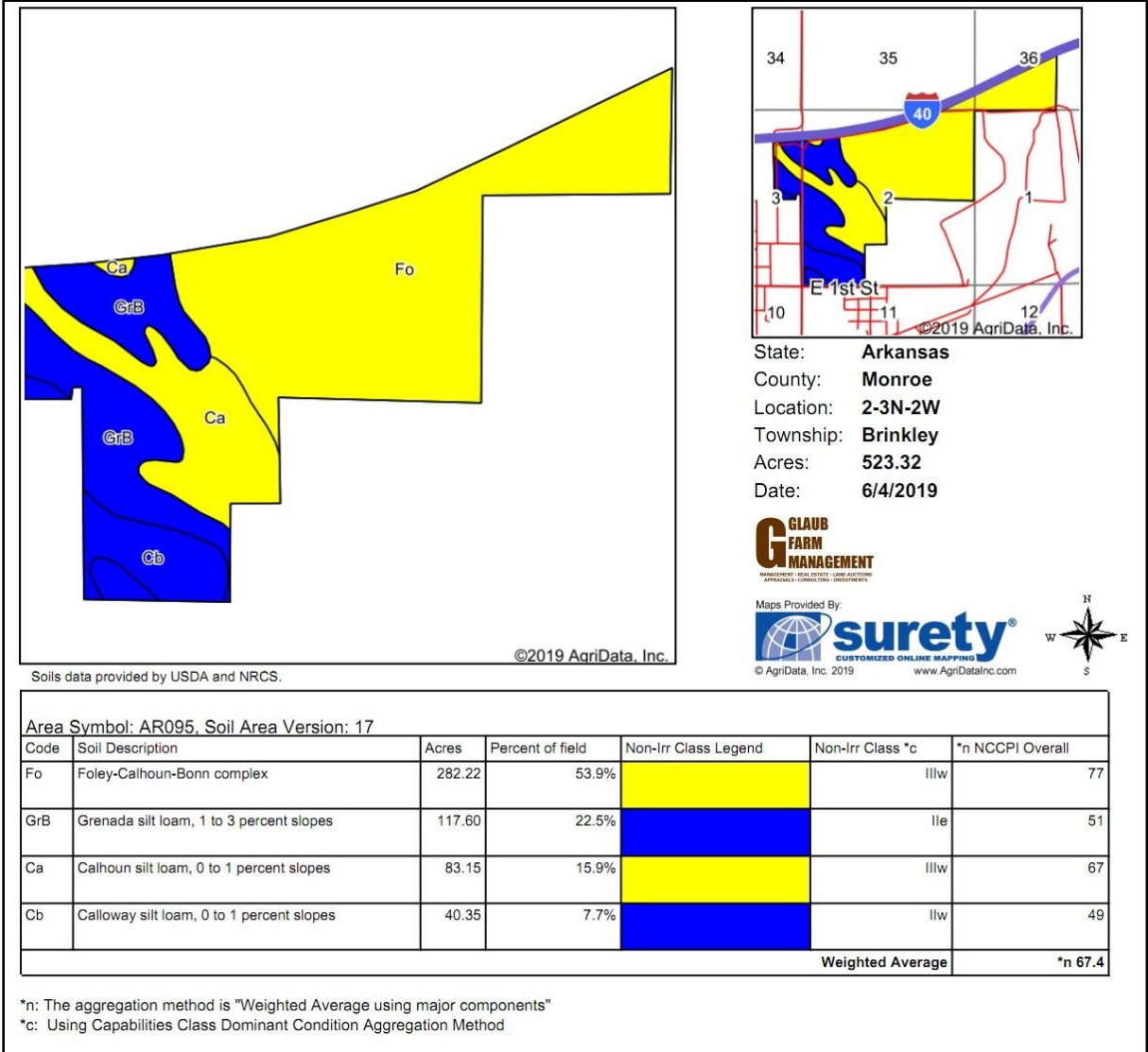
**G** **GLAUB**  
**FARM**  
**MANAGEMENT**  
MANAGEMENT - REAL ESTATE - LAND AUCTIONS  
APPRAISALS - CONSULTING - INVESTMENTS

Maps Provided By:  
  
CUSTOMIZED ONLINE MAPPING  
© AgriData, Inc. 2019 www.AgriDataInc.com

**2-3N-2W**  
**Monroe County**  
**Arkansas**

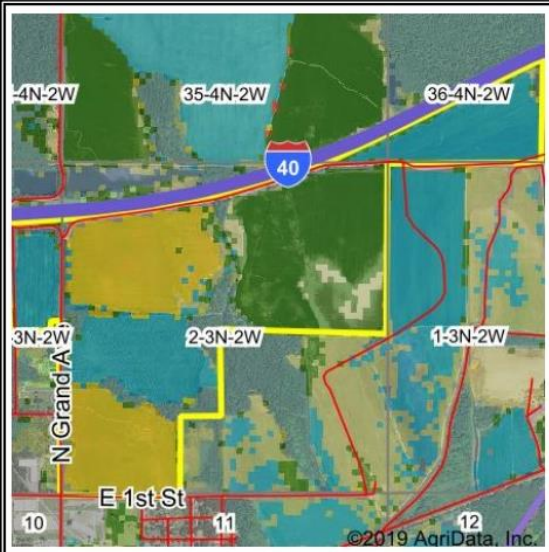
N  
W E  
S  
6/4/2019

# TRACT 6 SOILS MAP



# TRACT 6 CROP HISTORY

Crop Year:



6 rows not shown

Crop Year:



10 rows not shown

Crop Year:



8 rows not shown

Crop Year:



6 rows not shown

Map Center: 34° 54' 23.73, -91° 10' 34.5

State: AR County: Monroe

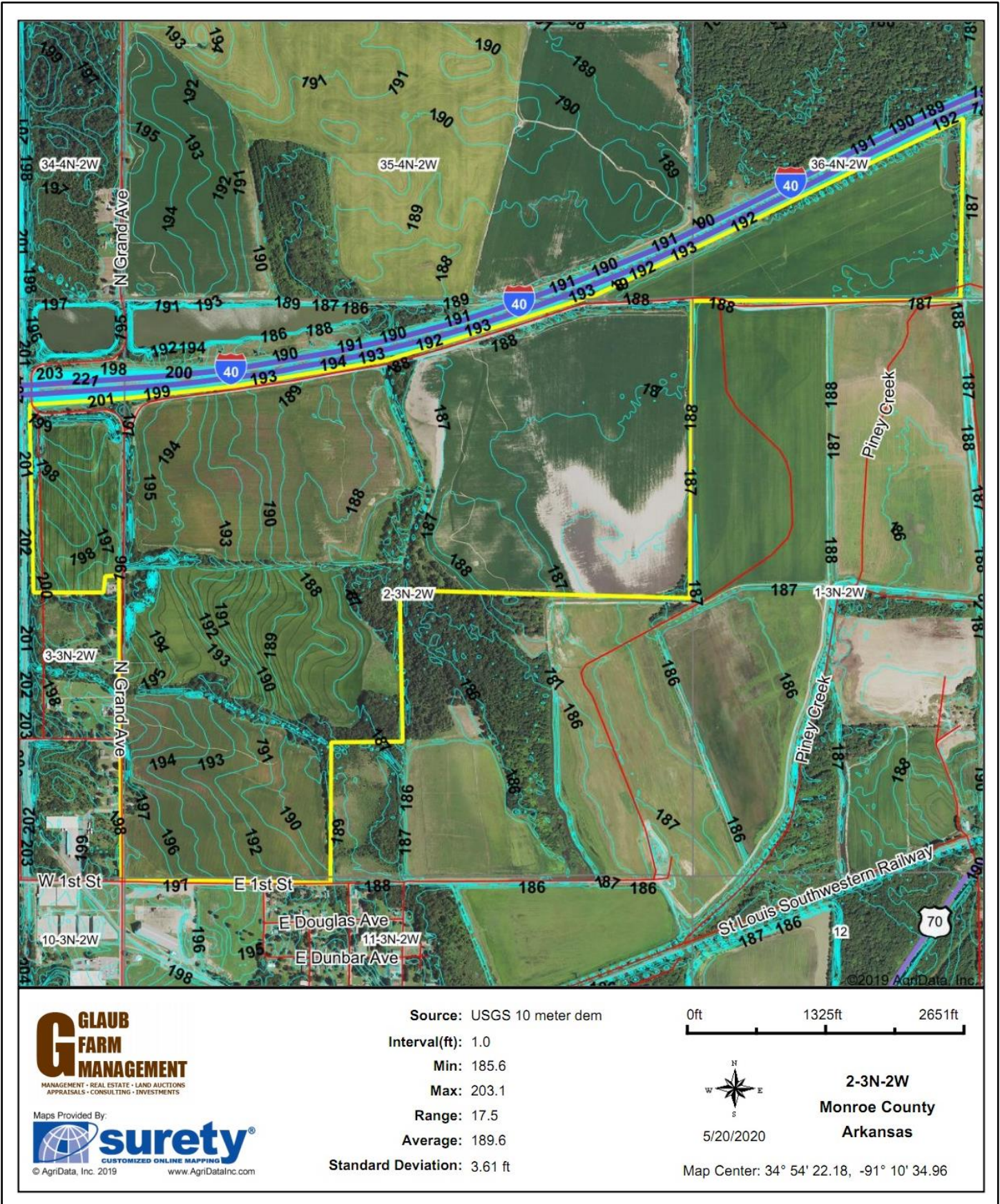
Legal: 2-3N-2W Twnshp: Brinkley

Crop data provided by USDA National Agricultural Statistics Service Cropland Data Layer



Maps Provided By:  
  
CUSTOMIZED ONLINE MAPPING  
© AgriData, Inc. 2019 www.AgriDataInc.com

# TRACT 6 ELEVATION MAP





# TRACT 6 FSA Information

Arkansas U.S. Department of Agriculture FARM: 3447  
 Monroe Farm Service Agency Prepared: 6/18/19 10:21 AM  
 Report ID: FSA-156EZ Abbreviated 156 Farm Record Crop Year: 2019  
 Page: 1 of 2

DISCLAIMER: This is data extracted from the web farm database. Because of potential messaging failures in MIDAS, this data is not guaranteed to be an accurate and complete representation of data contained in the MIDAS system, which is the system of record for Farm Records.

Operator Name HIGH ROAD FARMS Farm Identifier Recon Number

Farms Associated with Operator:  
 2572, 2983, 3107, 3242, 3278, 3280, 3436

ARC/PLC G/W/F Eligibility: Eligible

CRP Contract Number(s): None

Farmland	Cropland	DCP Cropland	WBP	WRP/EWP	CRP Cropland	GRP	Farm Status	Number of Tracts
547.32	463.97	463.97	0.0	0.0	0.0	0.0	Active	1

State Conservation	Other Conservation	Effective DCP Cropland	Double Cropped	MPL/FWP
0.0	0.0	463.97	166.0	0.0

ARC-IC NONE	ARC-CO WHEAT, SOYBN	ARC/PLC	PLC RICE-LGR	PLC-Default NONE
-------------	---------------------	---------	--------------	------------------

Crop	Base Acreage	CTAP Tran Yield	PLC Yield	CCC-505 CRP Reduction
WHEAT	63.61		63	0.0
RICE-LONG GRAIN	268.86		5604	0.0
SOYBEANS	297.34		30	0.0
<b>Total Base Acres:</b>	<b>629.81</b>			

Tract Number: 2842 Description: H4-1B SEC 36, T4N, R2W  
 FSA Physical Location: Monroe, AR ANSI Physical Location: Monroe, AR

BIA Range Unit Number:

HEL Status: NHEL: no agricultural commodity planted on undetermined fields

Wetland Status: Wetland determinations not complete

WL Violations: None

Farmland	Cropland	DCP Cropland	WBP	WRP/EWP	CRP Cropland	GRP
547.32	463.97	463.97	0.0	0.0	0.0	0.0

State Conservation	Other Conservation	Effective DCP Cropland	Double Cropped	MPL/FWP
0.0	0.0	463.97	166.0	0.0

Crop	Base Acreage	CTAP Tran Yield	PLC Yield	CCC-505 CRP Reduction
WHEAT	63.61		63	0.0
RICE-LONG GRAIN	268.86		5604	0.0
SOYBEANS	297.34		30	0.0

