

FARMLAND FOR SALE

163+/- Acres
Lee County, Arkansas



OFFERED BY

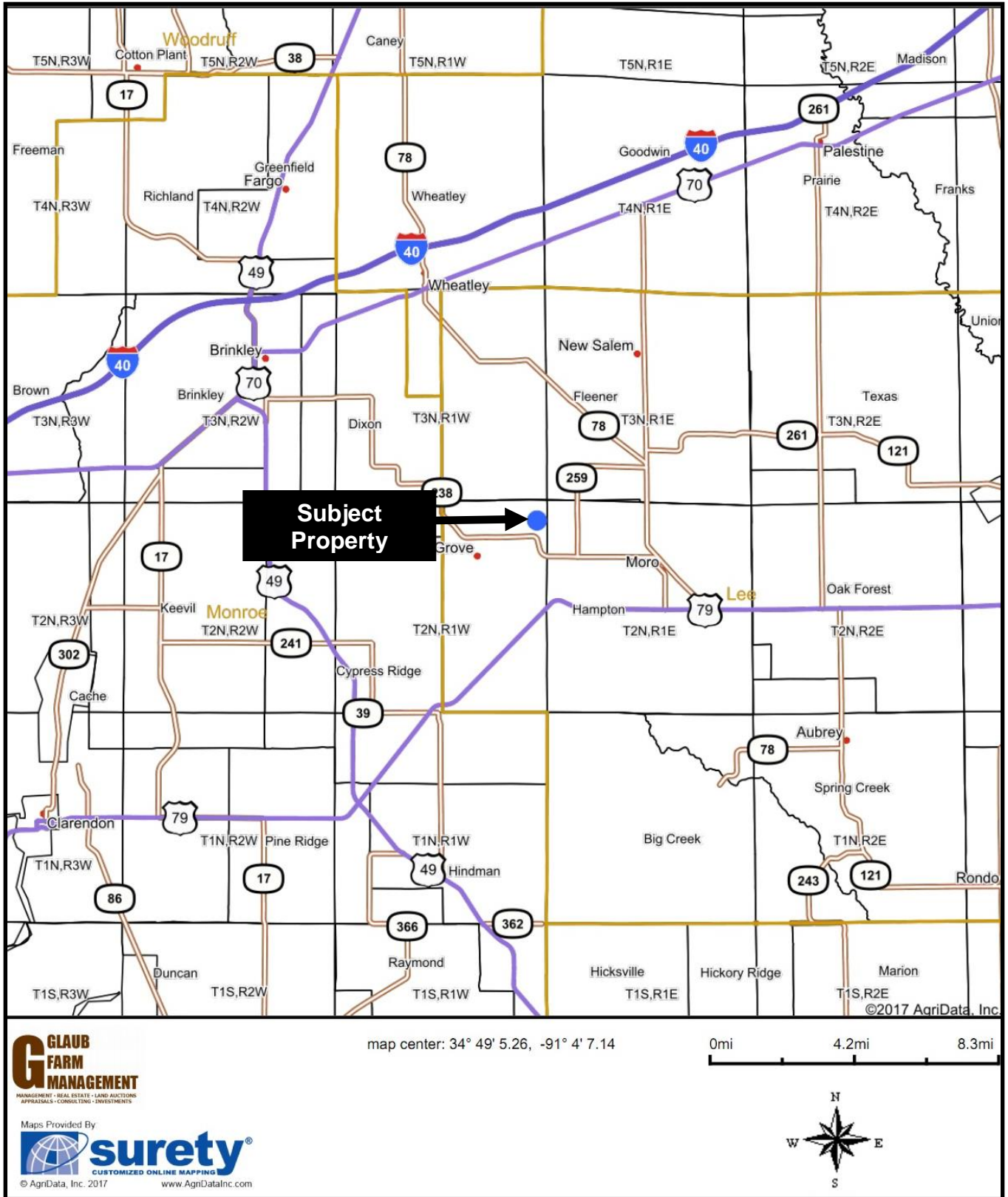
**G GLAUB
FARM
MANAGEMENT**

MANAGEMENT • REAL ESTATE • LAND AUCTIONS
APPRAISALS • CONSULTING • INVESTMENTS

For Additional Information Contact:

Glaub Farm Management, LLC
Ted Glaub or Ashley Cheney
1702 Stone, Suite C
Jonesboro, AR 72401
Office: (870) 972-6996
Fax: (870) 931-5985
Email: info@glaubfm.com
Website: www.GlaubFM.com

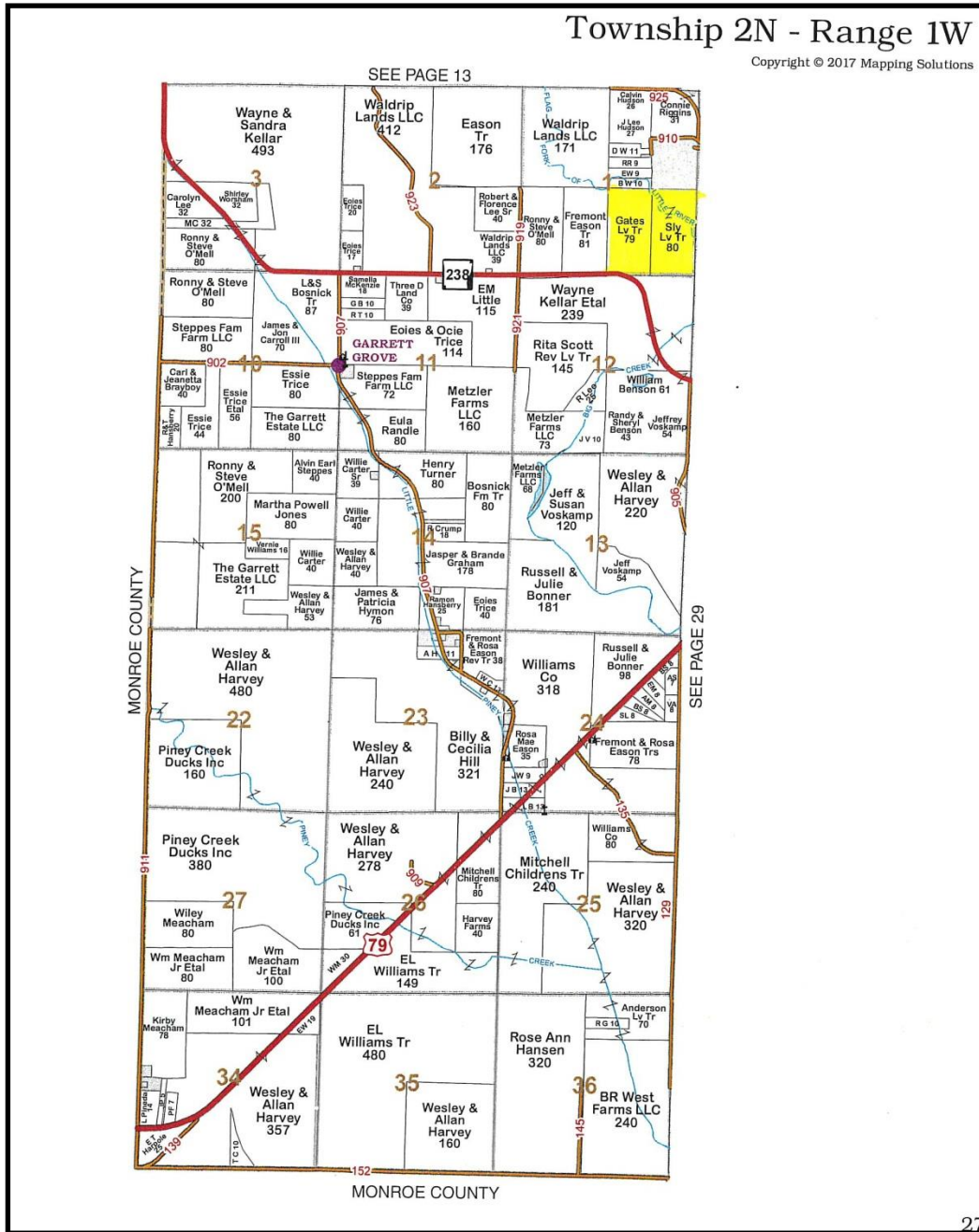
LOCATION MAP



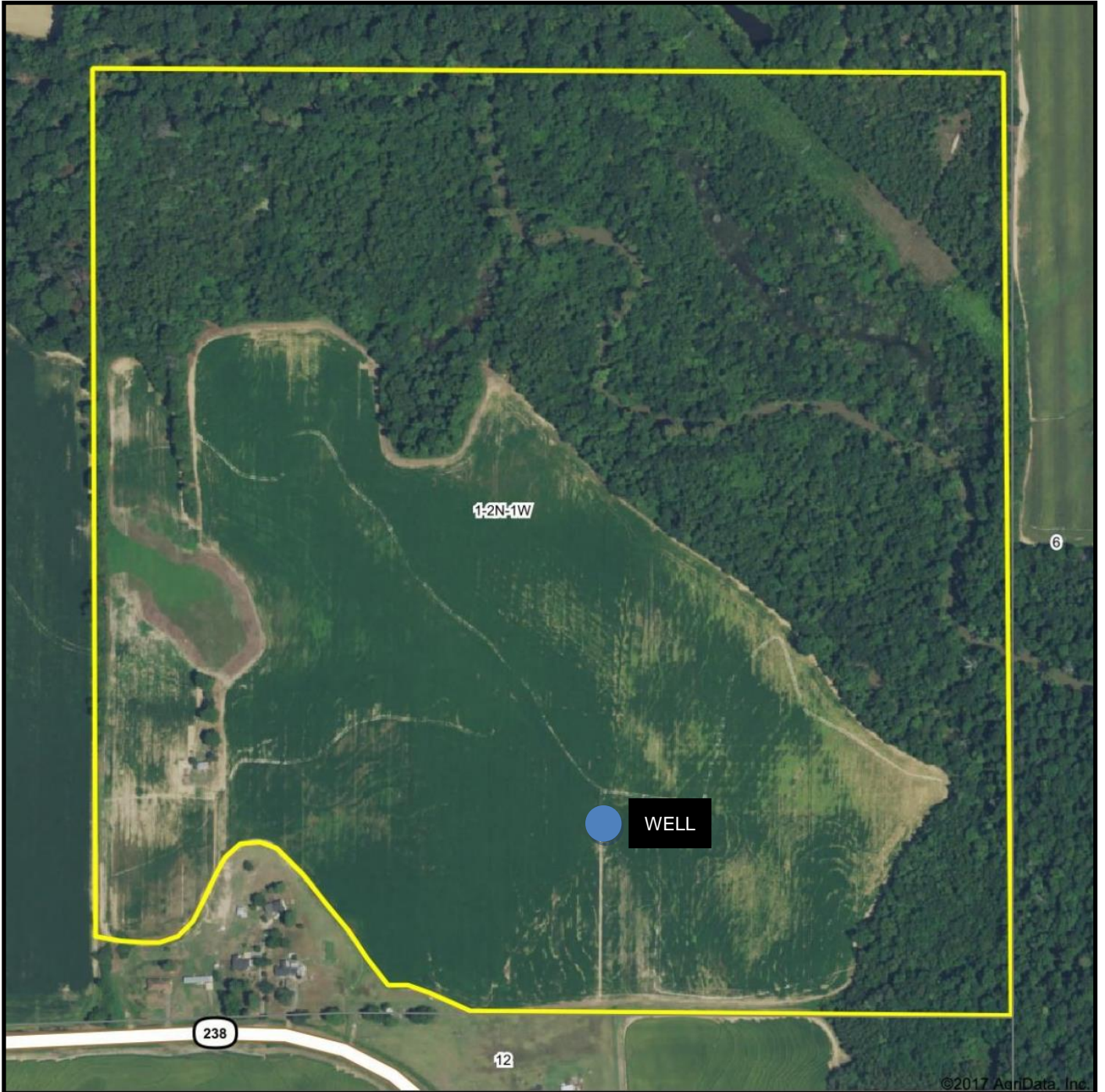
LOCATION MAP

Township 2N - Range 1W

Copyright © 2017 Mapping Solutions



AERIAL MAP



map center: 34° 48' 42.51, -91° 3' 7.46

0ft 402ft 804ft

G GLAUB
FARM
MANAGEMENT
MANAGEMENT - REAL ESTATE - LAND AUCTIONS
APPRAISALS - CONSULTING - INVESTMENTS

Maps Provided By

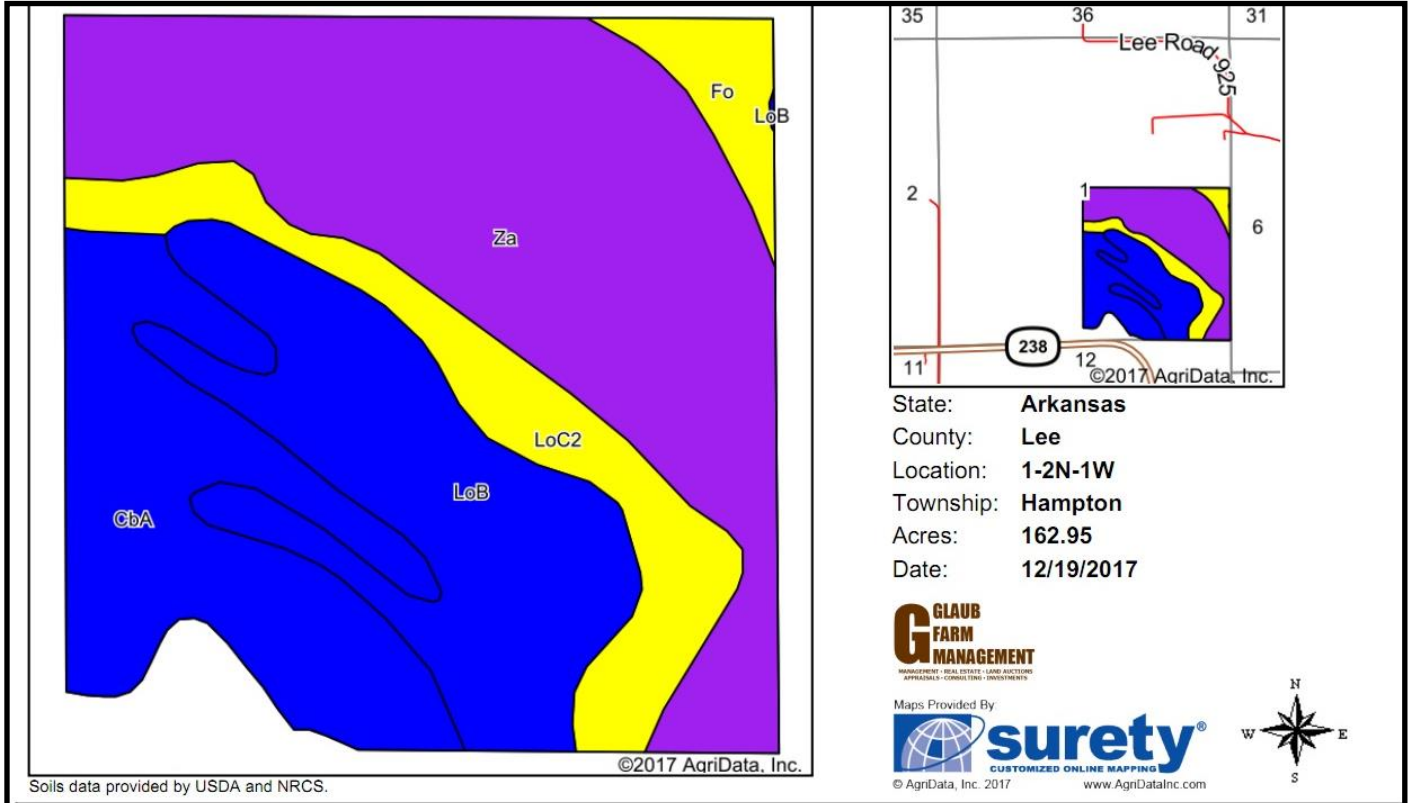
CUSTOMIZED ONLINE MAPPING

© AgriData, Inc. 2017 www.AgriDataInc.com

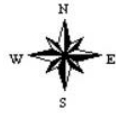
1-2N-1W
Lee County
Arkansas



SOILS MAP



State: **Arkansas**
 County: **Lee**
 Location: **1-2N-1W**
 Township: **Hampton**
 Acres: **162.95**
 Date: **12/19/2017**



Soils data provided by USDA and NRCS.

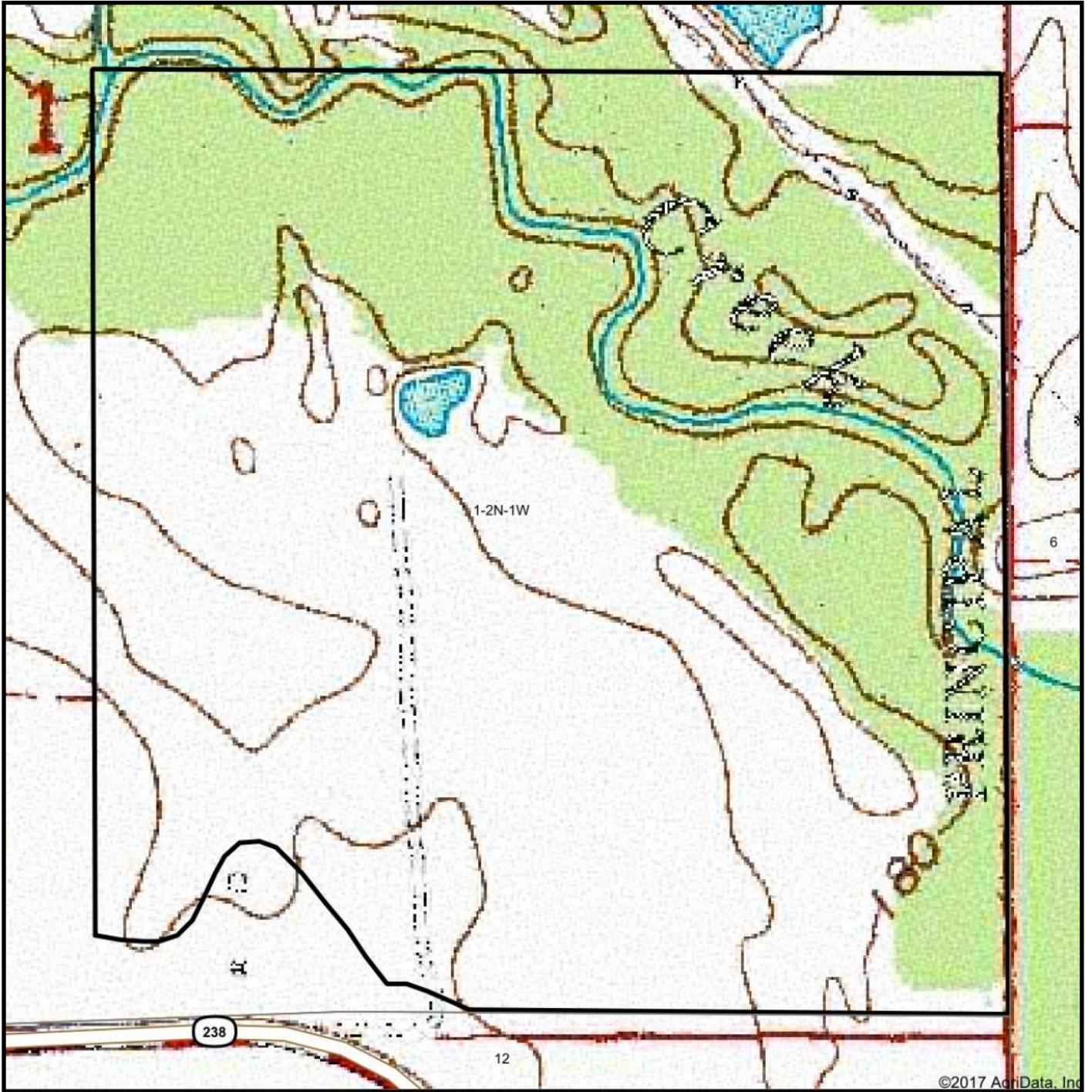
Area Symbol: AR077, Soil Area Version: 17

Code	Soil Description	Acres	Percent of field	Non-Irr Class Legend	Non-Irr Class *c	NCCPI Overall
Za	Zachary soils, frequently flooded	68.02	41.7%		Vw	24
LoB	Loring silt loam, 1 to 3 percent slopes, west	35.50	21.8%		Ile	54
CbA	Calloway silt loam, 0 to 1 percent slopes	34.47	21.2%		IIw	51
LoC2	Loring silt loam, 3 to 8 percent slopes, eroded	19.67	12.1%		IIIe	33
Fo	Foley-Bonn complex	5.29	3.2%		IIIw	65
Weighted Average						38.7

*c: Using Capabilities Class Dominant Condition Aggregation Method

Soils data provided by USDA and NRCS.

TOPOGRAPHY MAP



©2017 AgriData, Inc

map center: 34° 48' 42.51, -91° 3' 7.46



G LAUB FARM MANAGEMENT
MANAGEMENT - REAL ESTATE - LAND AUCTIONS
APPRAISALS - CONSULTING - INVESTMENTS

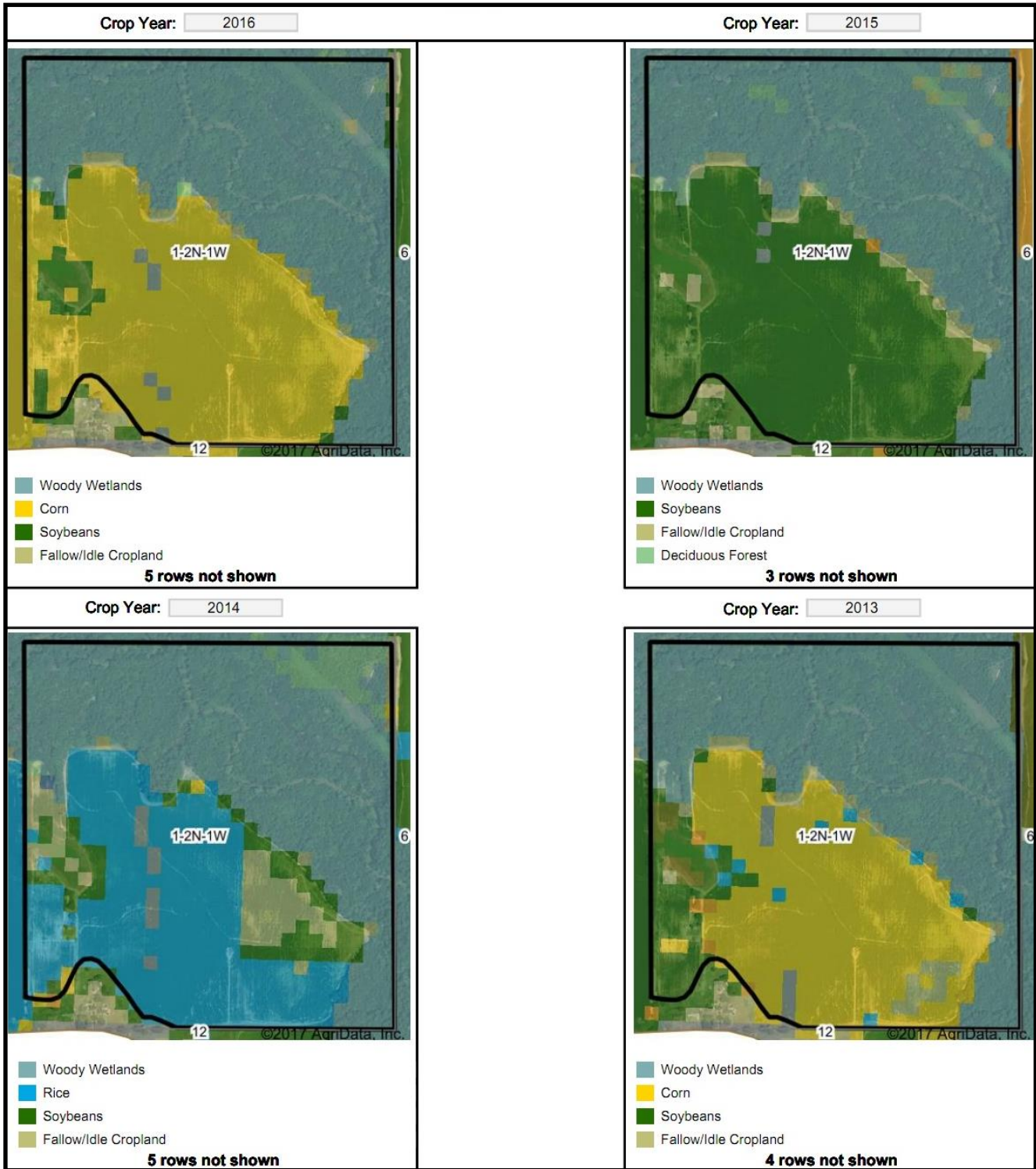
Maps Provided By

CUSTOMIZED ONLINE MAPPING
© AgriData, Inc. 2017 www.AgriDataInc.com

1-2N-1W
Lee County
Arkansas



CROP HISTORY MAP



PICTURES



